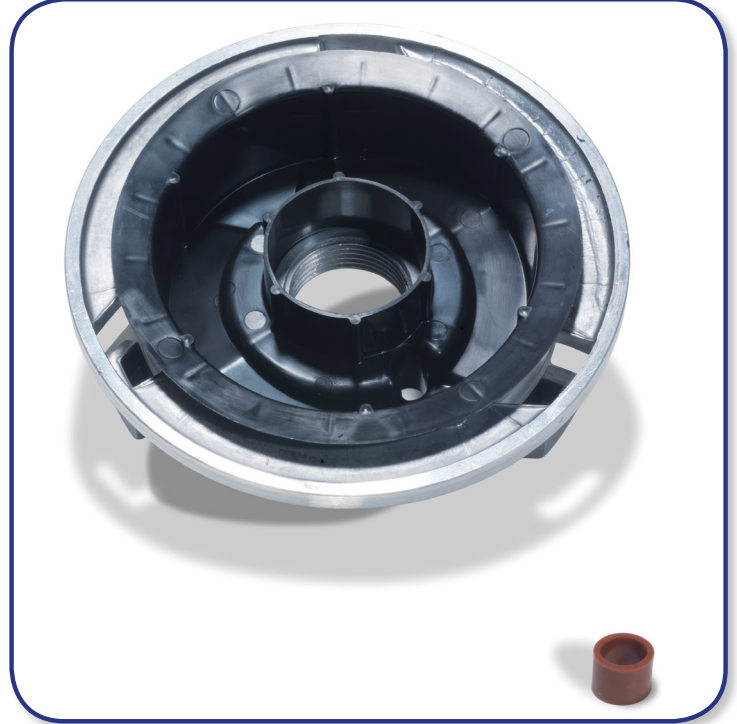


TT / TGB 1840 Chuck with Fluid Channel Kit

As part of Numatic International's commitment to product support and machine upgrades, we have introduced a new improved chuck design. The new chuck is designed to divert the flow of water to the centre of the brush therefore reduces splashing during cleaning and improves the overall cleaning performance of the machine. We have created a kit, which will allow the new chuck to be fitted to existing machines in the field, and comes with instructions on how to fit.



Kit numbers:- 905833 1840 CHUCK WITH FLUID CHANNEL KIT

Implementation serial number starting point 1731



Numatic International Limited,
Chard, Somerset, TA20 2GB
Tel: +44 01460 68600
Fax: +44 01460 68458.



www.numatic.co.uk



www.numatic.de



www.numatic.ch



www.numatic.fr



www.numatic.nl



www.numatic.co.za



www.numatic.pt

Specification subject to change without prior notice. TAP000037 Publish Date 5/09/2017